

Transfer Switching Equipment

by Socomec

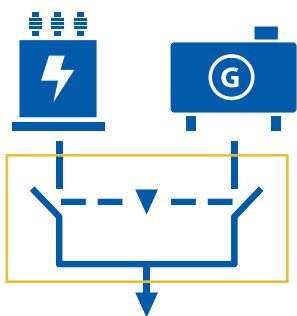


When
energy
matters

 **socomec**
Innovative Power Solutions

Choose the **TSE expert**

Constant power availability keeps your activity **safe and efficient.**



At Socomec, we have been **designing, manufacturing and testing** switchgear since 1922 and guarantee safe, reliable and long lasting Transfer Switching Equipment (TSE) for your electrical installation. All our solutions are fully compliant with **Class PC of IEC 60947-6-1**, the international product standard for TSE. Today, major integrators worldwide secure all types of installations with a Socomec transfer switch. Each day their smile is on knowing that their operations will always keep on running.



More than 3 million installations using Socomec TSE worldwide

> 700 000 h MTBF provides maximum reliability for your business

Over **4000 product** references, including the one that suits your installation

5 generations of Transfer Switching Equipment and always innovating for you

Why choose **Socomec**?



For all types of **sources**

- Utility
- Genset
- PV
- Battery
- UPS



For all types of **loads**

- Alternating current (AC)
- Direct current (DC)



For compliance with **international standards**

- IEC
- UL
- GB



For all your **integration needs**

- Open type
- Enclosed solutions

Manual Transfer Switching Equipment (MTSE)

from 25 to 3200 A



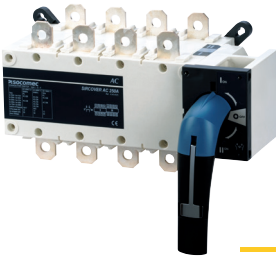
SIRCO M

- 25 to 125 A.
- Modular design.
- 3 or 4 pole.
- DIN rail or back plate mounting.



SIRCO VM1

- 63 to 125 A.
- Visible break.
- 3 or 4 pole.
- DIN rail or back plate mounting.



SIRCOVER

- 125 to 3200 A.
- I-0-II / I-I+II-II.
- 3 or 4 pole.
- Back plate mounting.
- UL 1008 version available.

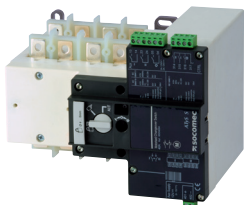


SIRCOVER Bypass

- 125 to 1600 A.
- I-0-II / I-I+II-II.
- 3 or 4 pole.
- Back plate mounting.

Remote Transfer Switching Equipment (RTSE)

from 40 to 6300 A



ATyS S & d S

- 40 to 125 A.
- AC or DC supply.
- Replaceable motor.
- Back plate mounting.

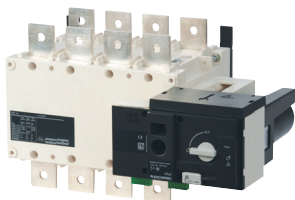
or



ATyS d M

- 40 to 160 A.
- Modular design.
- 2 or 4 pole.
- DIN rail or back plate mounting.

or



ATyS r

- 125 to 3200 A.
- Replaceable motor.
- 3 or 4 pole.
- Back plate mounting.
- UL 1008 version available.

+



ATyS C

ATS Controller for Transfer Switching Equipment



ATyS d H

- 4000 to 6300 A.
- 3 or 4 pole.
- Fixed or withdrawable.
- To be mounted in the enclosure of your choice.

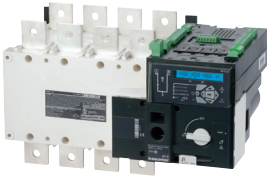
Automatic Transfer Switching Equipment (ATSE)

from 40 to 3200 A



ATyS t M, g M & p M

- 40 to 160 A.
- Modular design.
- 2 or 4 pole.
- DIN rail or back plate mounting.
- Connected product.



ATyS g & p

- 125 to 3200 A.
- Replaceable motor.
- 3 or 4 pole.
- Back plate mounting.
- Connected product.



ATyS Bypass

- 40 to 3200 A.
- Enclosed system.
- ATyS p/p M based.
- 3 or 4 pole.
- ATSE Maintenance & test with no downtime.

Static Transfer Switches (STS)

from 16 to 1800 A



STATYS

- Single-phase or three-phase.
- Rack mounting or enclosure.
- Hot swap.

DC applications transfer switches

from 40 to 1000 A



Renewable power

SIRCOVER PV

- 200 to 630 A.
- 1000 VDC - PV.
- Manual DC Transfer Switch.



Railway

ATyS S DC

- 40 to 360 A.
- 24 VDC.
- Remote DC Transfer Switch.



Battery charger

ATyS r DC

- 400 to 1000 A.
- 125 VDC.
- Remote DC Transfer Switch.

Socomec: our innovations supporting your energy performance

1
independent
manufacturer

3,600
employees
worldwide

10 % of sales
revenue dedicated
to R&D

400 experts
dedicated to
service provision

Your power management expert



POWER
SWITCHING



POWER
MONITORING



POWER
CONVERSION



ENERGY
STORAGE



EXPERT
SERVICES

The specialist for critical applications

- Control, command of LV facilities
- Safety of persons and assets
- Measurement of electrical parameters
- Energy management
- Energy quality
- Energy availability
- Energy storage
- Prevention and repairs
- Measurement and analysis
- Optimisation
- Consultancy, commissioning and training

A worldwide presence

12
production sites

- France (x3)
- Italy (x2)
- Tunisia
- India
- China (x2)
- USA (x3)

28
subsidiaries and
commercial locations

- Algeria • Australia
- Belgium • China • Canada
- Dubai (United Arab Emirates)
- France • Germany • India
- Indonesia • Italy • Ivory Coast
- Netherlands • Poland • Portugal
- Romania • Serbia • Singapore
- Slovenia • South Africa • Spain
- Switzerland • Thailand • Tunisia
- Turkey • UK • USA

80
countries
where our brand
is distributed

HEAD OFFICE

SOCOME C GROUP

SAS SOCOME C capital
10585900 €
R.C.S. Strasbourg B 548 500 149
B.P. 60010 - 1, rue de Westhouse
F-67235 Benfeld Cedex
Tel. +33 3 88 57 41 41 - Fax +33
3 88 57 78 78
info.scp.isd@socomec.com

YOUR DISTRIBUTOR / PARTNER

www.socomec.com



socomec
Innovative Power Solutions